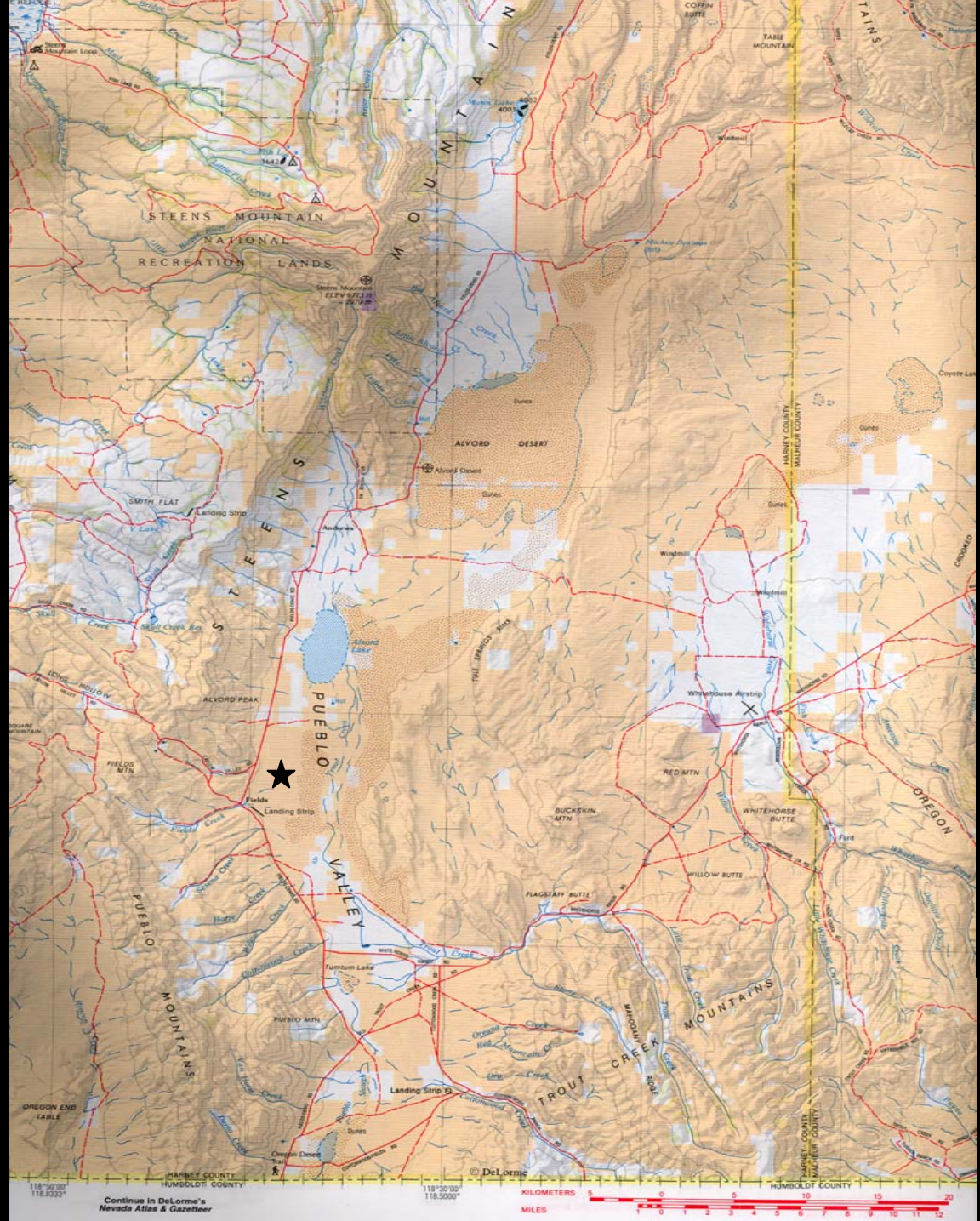


**The Alvord
Basin
stretches
many tens
of
kilometers
NNE x SSW**

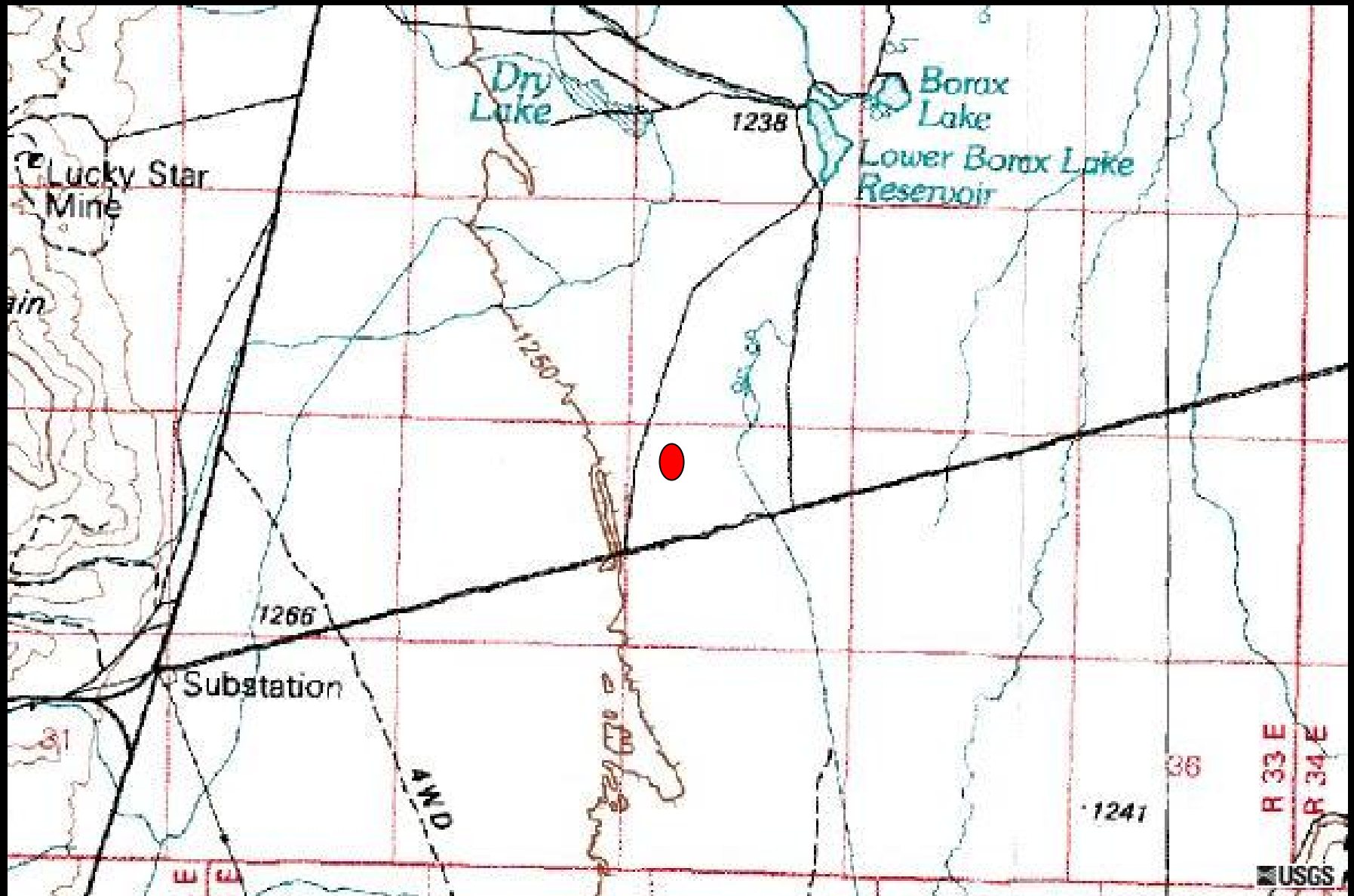
**(study site is at
black star)**



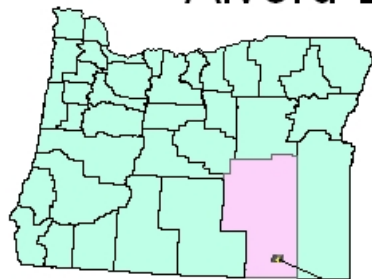
**The study
area is east
of the
intersection
of these two
roads
(see map)**



A closer view of the site location on a USGS quad map

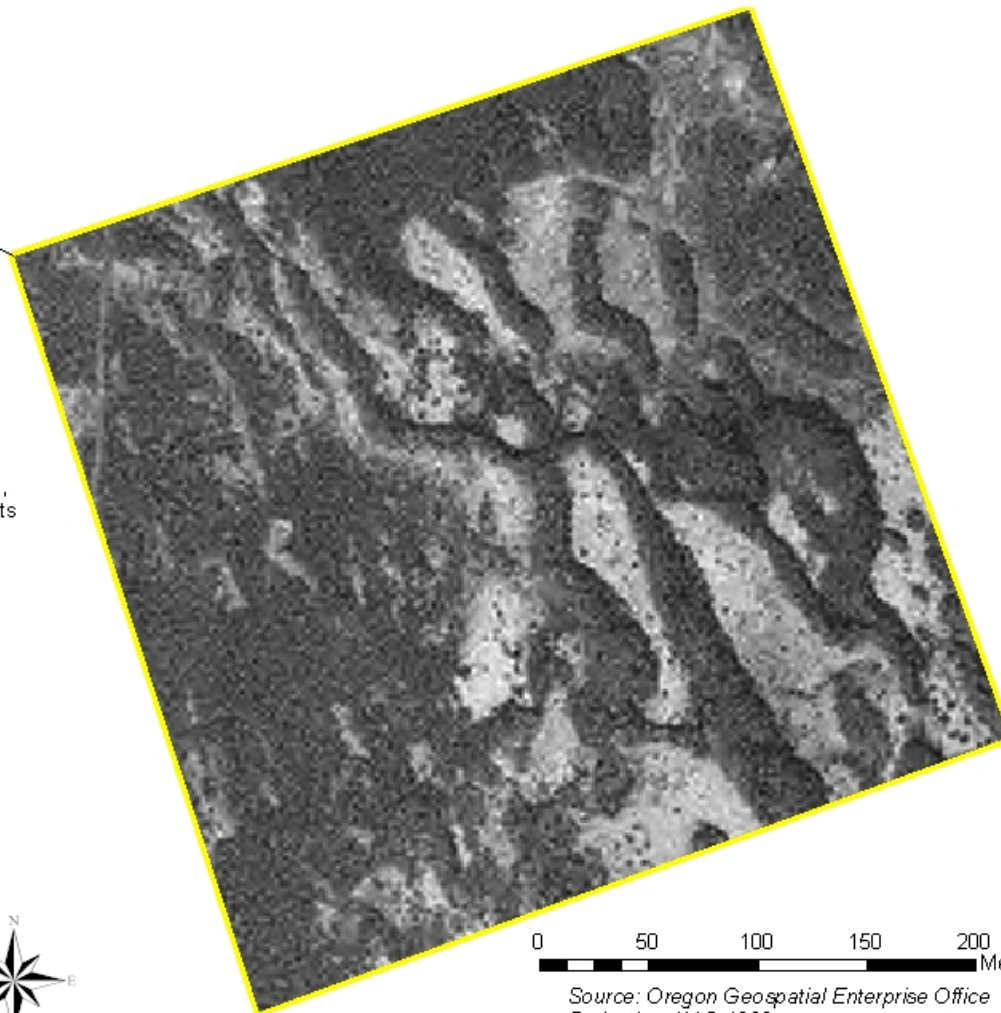


Alvord Basin Study Site, Harney County, Oregon



State of Oregon

The study site is approximately 6.25 hectares, and consists of three identifiable mesohabitats (dune, hardpan, sandy flat).

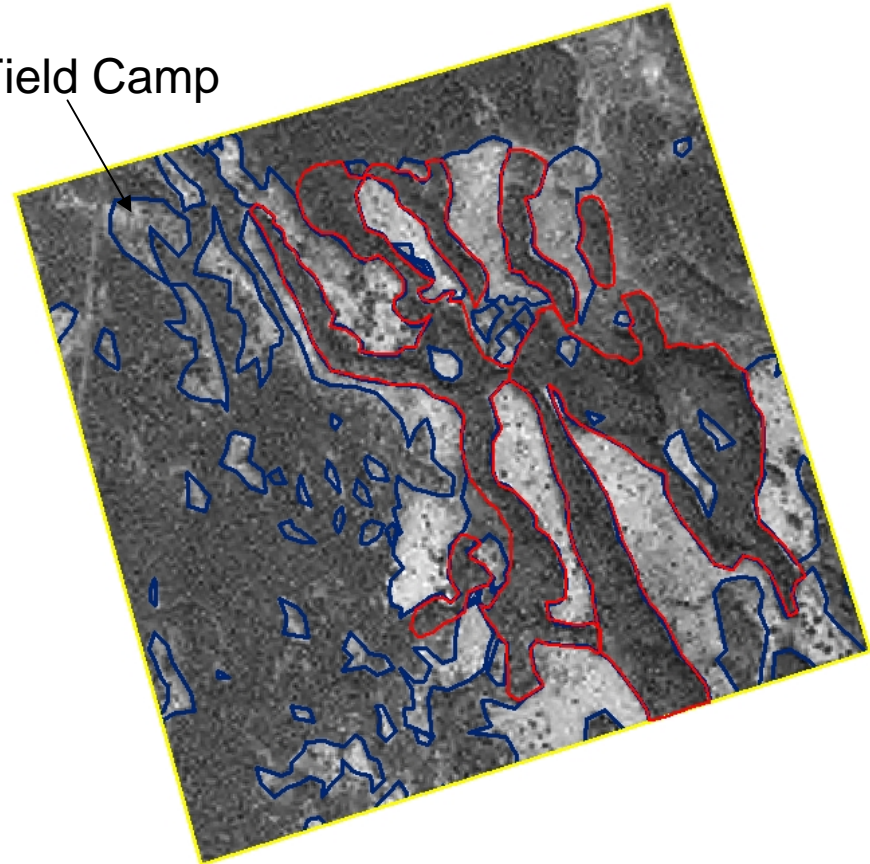


0 50 100 150 200 Meters

Source: Oregon Geospatial Enterprise Office
Projection: NAD 1983
Created by: Jennifer Korenek

Mesohabitat patterns in an area that includes the 200 x 200m study site in the Alvord Basin

Field Camp



| Mesohabitat Type | Percent |
|------------------|---------|
| Dune | 16 |
| Hardpan | 33 |
| Sandy flat | 51 |

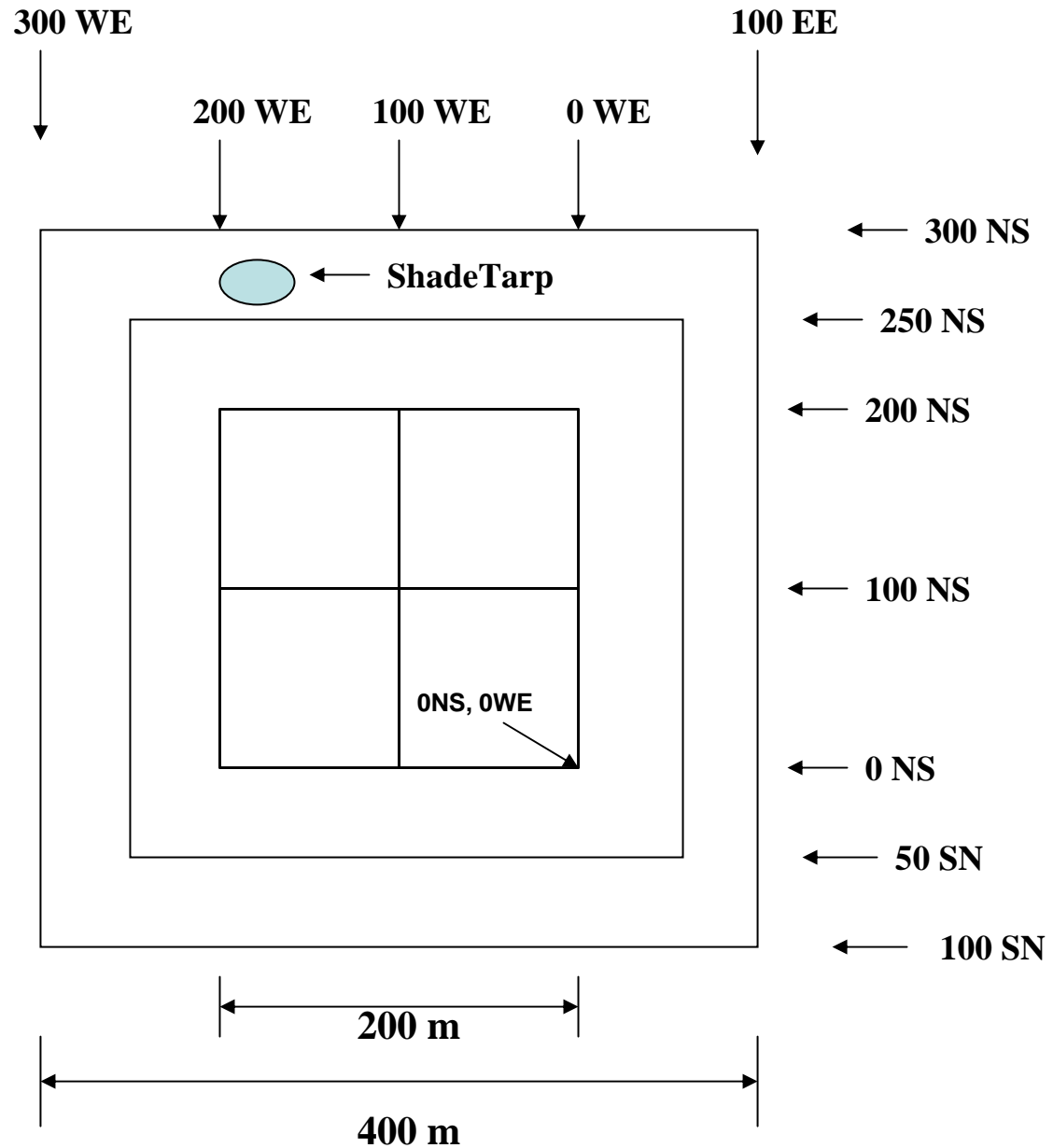
- Plot Boundary (6.25 ha)
- Hardpan
- Dune
- Sandy flat



0 25 50 100 150 200 Meters

Source: Oregon Geospatial Enterprise Office
Projection: NAD 1927
Created by: Jennifer Korenek

Biol 417a,b Field Course Site



**View to the north shows Steens Mt and the dominant basin shrubs:
gray-green color is Basin Big Sage (*Artemisia tridentata*, ARTR),
lime-green color is Greasewood (*Sarcobatus vermiculatus*, SAVE)**



**West view from study site:
Alvord Peak drenched in purple at dawn**



Research teams on the sandy flats



**ARTR dominated “flats” on the western one-third of the study site
continue for several km W and upslope of study site**



The study site is about 3.5 km from the W edge of the Alvord Basin, in an ecotone between the ARTR dominated flats upslope to the W and the SAVE dominated dune-and-hardpan salt flats downslope to the E



Wildflowers on the dune at study site in June



**Powder track trail of *Phrynosoma platyrhinos*
on dune, near plot center, looking ESE**



Jackrabbit among shrubs in a low extension of a dune



**Flags at 10m intervals stretch E across
sandy flats & hardpan, and up onto dune**



200m x 200m plot is grid-marked every 10m,
(note open aspect of hardpan)



**A tall post at
one of the
100 meter
positions, with
west view of
sandy flats and
esarpment just
S of Alvord
peak**



Late afternoon shadows on hardpan



Hardpan dries in quasi-regular patterns



Edge of dune and Hardpan



A dune about 200m SE of the study site, with a view to the NW



**An ecotone:
a thin sand layer
over hardpan
mixes
ARTR & LECI
of sandy flats
from upslope
with
SAVE & DISP
of salt flats
from downslope
(see ppt plantguide)**



**View of camp
from atop the
first large dune
200 m to the E**



**View from upslope,
in the ARTR dominated habitat, near the latrine;**



NE of the camp, the habitat differs somewhat from the study site

